

DECADES OF EXPERIENCE



THE WORLD'S LEADING SUPPLIER

Annually HL Display extrudes more Datastrips than it would take to encircle the globe. We have produced and delivered datastrips from the factory in Sundsvall since 1975. During these years we have built up extraordinary know-how and offer a wide range of quality datastrips comprising of more than 400 different profiles, which fit almost all shelves on the market.

A COLOUR FOR EACH CUSTOMER

Today we have over 350 different colours in our range, and in our colour laboratory we are ready to produce any new colour that a customer would like.

SLIMLINE™ - THE LATEST GENERATION OF DATASTRIP

Finding additional selling space in existing stores is becoming increasingly important. Slimline™ provides a unique solution that helps to add more shelves by reducing the space between them. The concept also increases the visual impact of the products displayed and offers a wide variety of clever accessories.

A SOLUTION FOR EVERY SHELF

Through our work with customers world-wide we have produced a vast range of solutions to suit all kinds of shelves - No matter what type of shelf you have - glass, wood, wire or metal.

FACTS

LARGE ASSORTMENT

- » The Datastrip range includes more than 400 different profiles.
- » The strips are available in 10 different heights.
- » HL Display is the largest manufacturer of shelf edge profiles worldwide and can offer the most competitive prices.
- » More than 350 special colours on offer.
- » In-house testing laboratory ensuring product quality and durability.
- » High impact strength combined with impressive UV-stability.



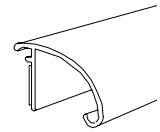
SLIMLINE™ XS

Slimline™ XS is a smaller and slimmer version of Slimline™ and is mostly used for thinner shelves in the cosmetic area. The label holder is only 25 mm height. The rear part which is taped on the shelf is only about 12 mm.

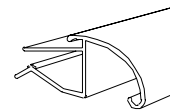
The product range can not be combined with our classic Slimline™ profiles.



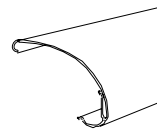
SETA-TF9-
Slimline™ XS carrier profile
 Mounting with foam tape.
 Available in different colours.
 Number per carton: 25.



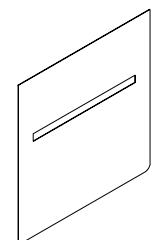
SEGLS-
Slimline™ XS carrier profile (glass shelves etc)
 For glass, wood, metal shelves.
 For shelves 7-10 mm thick.
 Available in different colours.
 The rear part is always transparent.
 Number per carton: 25.



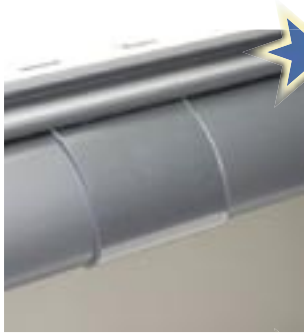
SE25-
Label holder to Slimline™ XS carrier profiles
 Supplied cut to size. Please specify.
 Hold the label close to the Slimline™ XS profile.
 Label height 25 mm.
 Number per carton: 100.



TPS-SE
Shelftalker for Slimline™ XS
 This shelftalker is securely locked in position by the label holder SE25.
 Printed with the graphics of your choice.
 Number per bag: 100.



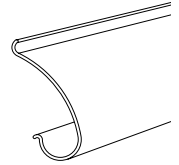
SLIMLINE™



F26-

Label holder to fit all Slimline™ carrier profiles

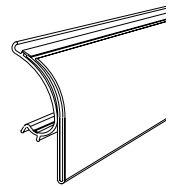
Supplied cut to size. Please specify.
Holds the label close to the Slimline™ profile.
Label height 26 mm.
Number per carton: 150.



FF31FF-

Label holder to fit all Slimline™ carrier profiles

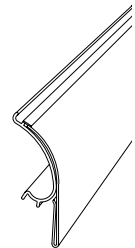
Supplied cut to size. Please specify.
The FF31FF is with a transparent front .
Label height 31 mm.
A hinge function allows the label holder to flip up.
Available in different colours.
Patented design.
Number per carton: 150.



FFxx-

Label holder to fit all Slimline™ carrier profiles

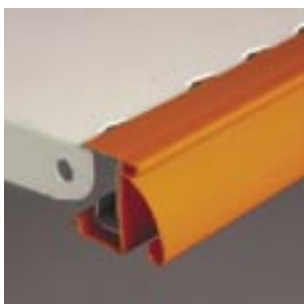
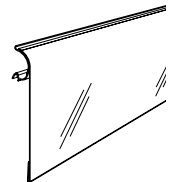
Supplied cut to size. Please specify.
Label heights 31 and 39 mm.
Can be supplied surface printed with your logo or other graphics. Contact us for details.
A hinge function allows the label holder to flip up.
Patented design.
FF31, number per carton: 100.
FF39, number per carton: 150.



FF-rp50-105-

Label holder to fit all Slimline™ carrier profiles

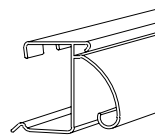
Supplied cut to size.
Label heights between 50 and 105 mm.
A hinge function allows the label holder to flip up.
Patented design.
Number per carton: 100



MPA25-

Slimline™ carrier profile for Alser C-rail shelf

Fits Alser 25 mm C-rail shelf.
Available in different colours.
Patented design.
Number per carton: 75.

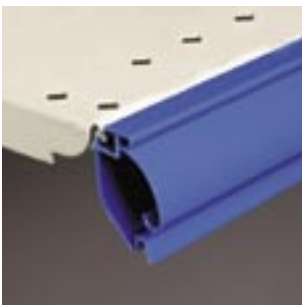
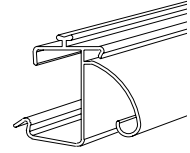




OMPA25-

Slimline™ carrier profile for Alser C-rail shelf

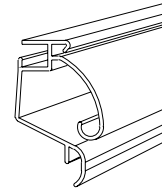
Fits Alser 25 mm C-rail shelf.
With integrated Optimal™ rail.
Available in different colours.
Patented design.
Number per carton: 75.



MPAL-

Slimline™ carrier profile for Alser C-rail shelf

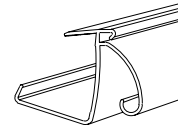
Fits Alser 35 mm C-rail shelf.
Available in different colours.
Patented design.
Number per carton: 75.



MPLF-

Slimline™ carrier profile for La Fortezza shelf

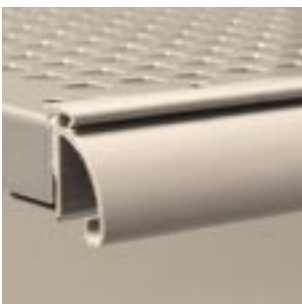
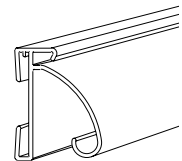
Fits La Fortezza 25 mm C-rail shelf.
Available in different colours.
Patented design.
Number per carton: 75.



MPFO-

Slimline™ carrier profile for FO-FR clips

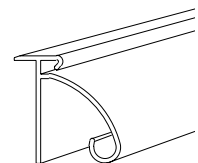
Fixed with FO-FR clips.
Available in different colours.
Patented design.
Number per carton: 90.



MPCA1-TF19-

Carrier profile for the Slimline™ system

Mounting with foam tape. The rear part size is available in 18 to 37 mm height. Please specify.
Available in different colours.
Patented design.
Number per carton: 100.

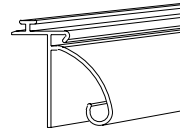




OMPCA1-TF19-

Carrier profile for the Slimline™ system

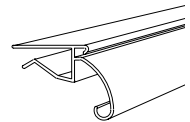
Mounting with foam tape. The rear part size is available in 18 to 37 mm height. Please specify.
With integrated Optimal™ rail.
Available in different colours.
Patented design.
Number per carton: 100.



MPGLS7-, MPGLS10-

Slimline™ carrier profile for glass shelves

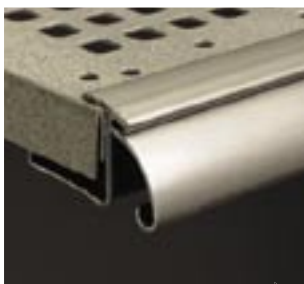
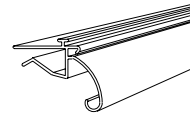
For shelves 6-10 mm thick.
MPGLS7- is for shelves 6-7 mm thick, and MPGLS10 is for shelves 8-10 mm thick.
Available in different colours.
The rear part is always transparent.
Friction material at the rear part for better grip function to the glass.
Patented design.
Number per carton: 75.



OMPGLS7-, OMPGLS10-

Slimline™ carrier profile for glass shelves

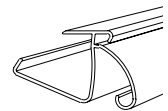
For shelves 6-10 mm thick.
OMPGLS7- is for shelves 6-7mm thick, and OMPGLS10 is for shelves 8-10 mm thick.
With integrated Optimal™ rail.
The rear part is always transparent.
Friction material at the rear part for better grip function to the glass.
Available in different colours.
Patented design.
Number per carton: 75.



MPHL-

Slimline™ carrier profile for HL Display shelf

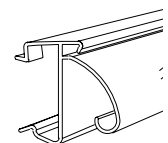
Fits HL Display shelf.
Available in different colours.
Patented design.
Number per carton: 50.



MPHC-

Slimline™ carrier profile for Hermes Metal C-rail shelf

Fits Hermes Metal 25 mm C-rail shelf.
Available in different colours.
Patented design.
Number per carton: 90.

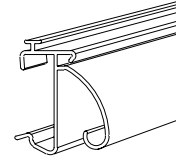




OMPHC-

Slimline™ carrier profile for Hermes Metal C-rail shelf

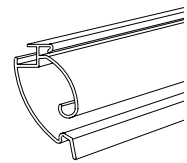
Fits Hermes Metal 25 mm C-rail shelf.
With integrated Optimal™ rail.
Available in different colours.
Patented design.
Number per carton: 90.



MPHO-

Slimline™ carrier profile for Hermes Metal C-rail shelf

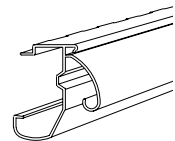
Fits Hermes Metal 35 mm C-rail shelf.
Available in different colours.
Patented design.
Number per carton: 75.



MPCAS-

Slimline™ carrier profile for Hermes Metal shelf

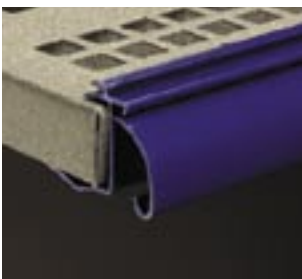
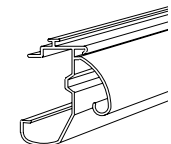
Fits Hermes Metal 50 mm shelf, with or without C-rail.
Available in different colours.
Patented design.
Number per carton: 50.



OMPCAS-

Slimline™ carrier profile for Hermes Metal shelf

Fits Hermes Metal 50 mm shelf, with or without C-rail.
With integrated Optimal™ rail.
Available in different colours.
Patented design.
Number per carton: 50.



OMPHRN-

Slimline™ carrier profile for ITAB and other shelves

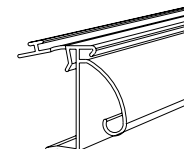
For Hestra, ROL, Expedit, ITAB and other shelves.
With integrated Optimal™ rail.
Available in different colours.
Patented design.
Number per carton: 50.



OMPRA-

Carrier profile for Van Keulen and Linde shelves

Fits van Keulen and Linde shelves with U-channel.
With integrated Optimal™ rail.
Available in different colours.
Patented design.
Number per carton: 50.

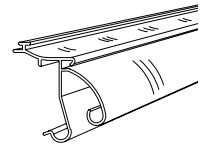




OMPTE-

Slimline™ carrier profile for Tegometall shelf

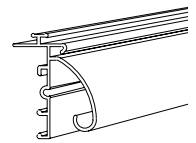
With integrated Optimal™ rail.
Available in different colours.
Patented design.
Number per carton: 50.



OMPGWN-

Slimline™ carrier profile for GWN-mertens shelf

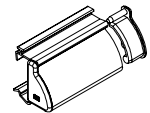
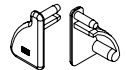
With integrated Optimal™ rail.
Available in different colours.
Patented design.
Number per carton: 75



SEND

Endcap to fit the Slimline™ system

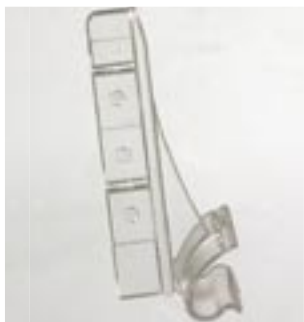
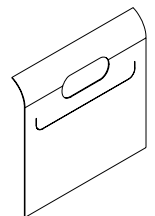
Mounted at the end of the carrier profile.
Available in transparent and black.
Number per carton: 25 pairs.



SC-FF-

Printed Slimline™ Shelftalker

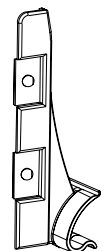
To create in-store communication around the FF- label holder.
White 0.4 mm material, lengths up to 210 mm.
Contact us for the possible modifications.
For more info about Slimline™ Shelftalkers,
see Chapter Shelftalkers.



SLIMFLAG

Flagholder/Shelftalker to fit the Slimline™ system

Flagholder that works as an aisle-sign, at 90° angles to the shelf to attract maximum attention. Combine the flagholder, SLIMFLAG with a printed sign, TPL-U or a heat-bent pocket (with or without print) DBE as for CARFLAG.
Number per carton: 100.



SLIM-HOOK

Coupon holder and merchandising hook for Slimline™

Secure snap-on hook to hold coupons on Slimline™ profiles.
Provided with a finger grip to release from the Slimline™ profile.
Fits both non-angled and 20° angled shelves.
Total perpendicular length 40 mm.
For coupons with minimum 7 mm holes.
Colour: Transparent, others on request.
Number per bag: 50.
Number per carton: 200.





SLIM-LOOP

Flip-book holder for Slimline™

With this reliable snap-on loop for Slimline™ profiles you can create selection guides up to any length, just by making two holes in your pages. For longer flip-books add one or two additional SLIM-LOOP's in the centre of the pages. The loop itself is provided with a snap locking mechanism for reliable securing of the messages and a stopper that holds the messages in a maximum 20° flip-up position.

Provided with a finger grip to release from the Slimline™ profile.

Fits both non-angled and 20° angled shelves.

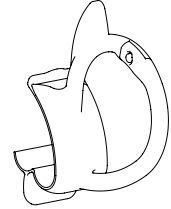
Ring diameter inside 25 mm.

For pages with minimum 6 mm holes
(we recommend 10 mm holes).

Colour: Transparent, others on request.

Number per bag: 50.

Number per carton: 200.



SLIM-KLG

Perpendicular sign holder for Slimline™

Secure snap-on sign holder with pin-locking mechanism for substrates up to 0,5 mm thickness. Provided with a finger grip to release from the Slimline™ profile for easy re-signing.

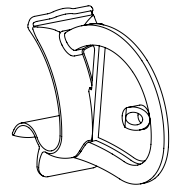
Fits both non-angled and 20° angled shelves.

For 5,0 mm hole diameter in the flags.

Colour: Transparent, others on request.

Number per bag: 50.

Number per carton: 200.



WOODLINE



WORxx-

Wooden datastrip with foam tape

Made in real wood. The labels are held in position by a clear transparent plastic profile.

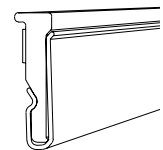
The datastrip is mounted on to the shelf with adhesive foam tape.

Can also be combined with different back pieces to fit different types of shelves as in the examples below.

Label heights 26, 30, 39 and 52 mm.

Available in 3 types of wood: Beech, Birch and Oak.

Number per carton: 15.



FRR-WORxx-

Wooden datastrip with FRR rear piece

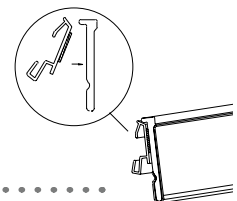
Fits on the following shelves: Craig Nichols, Giblain Lavault, Hermes Metal and Nuttall.

Fixed with FO-FR clips.

FRR-WOR26, FRR-WOR30, number per carton: 18.

FRR-WOR39, number per carton: 14.

FRR-WOR52, number per carton: 12.



NOTE

- Be sure to
- order the
- correct
- rear piece
- for your
- wooden
- datastrip



TER-WORxx-

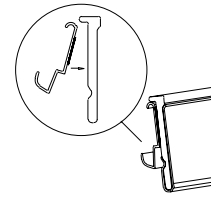
Wooden datastrip with TER rear piece

Fits on Tegometall shelves.

TER-WOR26, number per carton: 18.

TER-WOR30, TER-WOR39, number per carton: 14.

TER-WOR52, number per carton: 12.



LSR-WORxx--

Wooden datastrip with LSR rear piece

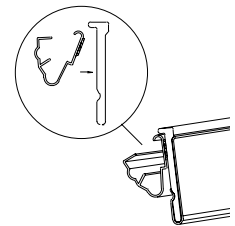
Fits on shelves: Linde, Storebest, Tegometall and various other shelves.

Can be used at different angles.

LSR-WOR26, LSR-WOR30, number per carton: 12.

LSR-WOR39, number per carton: 10.

LSR-WOR52, number per carton: 8.



GPR-WORxx--

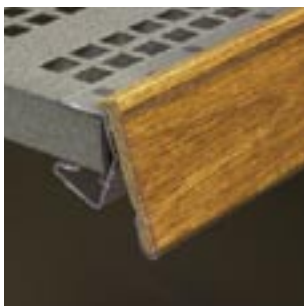
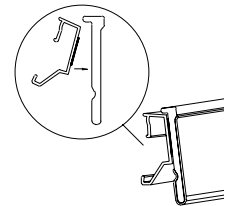
Wooden datastrip with GPR rear piece

Fits on Gondela shelves.

GPR-WOR26, number per carton: 16.

GPR-WOR30, GPR-WOR39, number per carton: 14.

GPR-WOR52, number per carton: 8.



ANTLR-WORxx-

Wooden datastrip with ANTLR rear piece

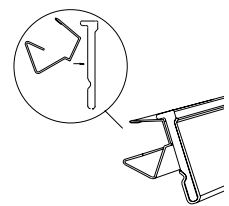
(ANTL with a reduced backpart)

Fits on 19 - 25 mm shelves.

ANTLR-WOR26, ANTLR-WOR30, number per carton: 9.

ANTLR-WOR39, number per carton: 8.

ANTLR-WOR52, number per carton: 6.



WOD39-

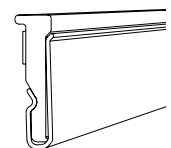
Woodlike datastrip with foam tape

Made in plastic. The labels are held in position by a clear transparent plastic profile. The datastrip is mounted using foam tape. Can also be combined with different rear pieces to fit different types of shelves.

Available rear pieces are the same as for WOR39.

Available in Beech, Birch and Oak effect material.

Number per carton: 15.



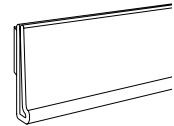
WITH TAPE



DBLxx-TP-

Datastrip with tape

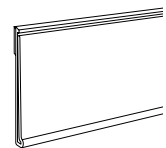
Label heights 17 and 20 mm.
Available in different colours.
Number per carton: 50.



DBRxx-TP-

Datastrip with tape and a roof

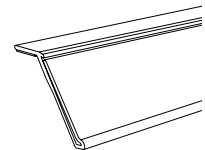
With tape and a roof to protect the label.
Label heights 26, 30, 35, 39, 45, 52, 60, 70 and 76 mm.
Available in different colours.
Number per carton: 50.



HExx-TP-

Datastrip with tape, roof and an angle

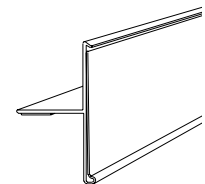
With approx. 20° angle.
Label heights 26, 30 and 39 mm.
Available in different colours.
Number per carton: 50.



HEF39-TP-

Datastrip with tape and a small front stopper

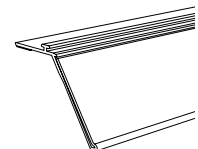
With 0° angle.
Label height 39 mm.
Available in different colours.
Number per carton: 25.



OHENxx-TP-

Datastrip with tape and integrated Optimal™ rail

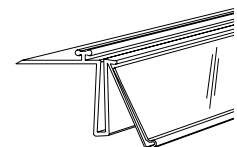
Label heights 26 and 39 mm.
Available in different colours.
Number per carton: 25.



OPT26-

Datastrip with tape and integrated Optimal™ rail

With approximately 22° angle.
Label height 26 mm.
Available in different colours.
Number per carton: 50.

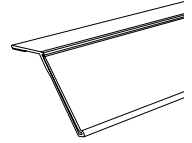




HELxx-TP-

Datastrip with tape and an angle

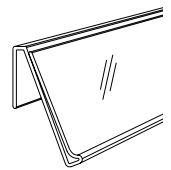
Extended rear piece, 29 mm long.
With approx. 20° angle.
Label heights 30 and 39 mm.
Available in different colours.
HEL30, number per carton: 90.
HEL39, number per carton: 50.



NO20-TP-

With tape and an angle

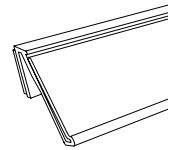
With approx. 25° angle.
Label height 20 mm.
Standard with thin tape.
Available in different colours.
Number per carton: 50.



NO26-TF-

Datastrip with foam tape and an angle

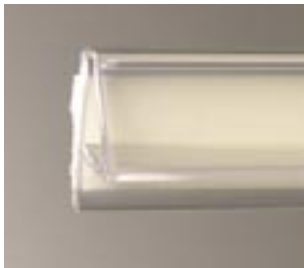
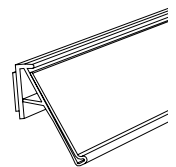
With approx. 25° angle.
Label height 26 mm.
Available in different colours.
Number per carton: 25.



NONxx-TF-

Datastrip with foam tape

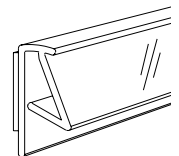
With approx. 20° degrees angle, for NON60-TF- 16° angle.
Label heights 30, 39, 52 and 60 mm.
Available in different colours.
NON30-TF, NON39-TF, number per carton: 50.
NON52-TF, NON60-TF, number per carton: 25.



NON-TF-

Datastrip with foam tape

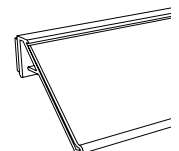
With approx. 20° degrees angle.
Label heights 35, 45, 70 and 76 mm.
The front is assembled on the rear piece and available in different colours.
Number per carton: 25.



NOPxx-TF-

Datastrip with foam tape

With 45° angle.
Label heights 39 and 60 mm.
Available in different colours.
NOP39, number per carton: 50.
NOP60, number per carton: 25.



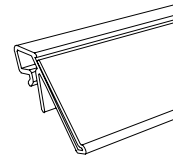
FOR WIRE BASKETS/SHELVES AND GLASS EDGES



BKxx-

Datastrip for wire baskets

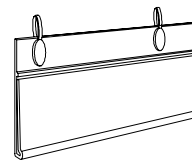
For baskets with wire on the inside.
Max. 8 mm \varnothing wire.
Label heights 30 and 39mm.
Available in different colours.
Number per carton: 25



DBHxx-

Datastrip with clips for wire baskets

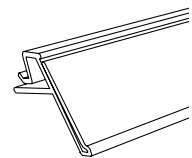
For wire baskets, to be fixed with clips included - HM or HML.
Label heights 26, 30, 39 and 60 mm.
Available in different colours.
Number per carton: 50.



DKxx-

Datastrip for glass and wire shelves

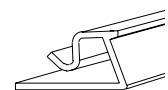
For glass and wire shelves 4-7 mm.
Edge prevent goods from falling over.
Label heights 26 and 39 mm.
Available in different colours.
DK26, number per carton: 50
DK39, number per carton: 70



DK-

Datastrip for glass and wire shelves

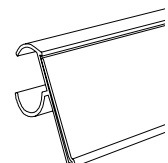
For glass and wire shelves 4-7 mm.
Edge prevents goods from falling over.
Label heights 30, 35, 45, 52, 60, 70 and 76 mm.
The front is assembled on the rear piece and available in different colours.
Number per carton: 25.



FRKxx-

Datastrip for wire shelves

Label heights 26 and 39 mm.
Available in different colours.
FRK26, number per carton: 50.
FRK39, number per carton: 25.





FRWxx-

Datastrip for wire shelves

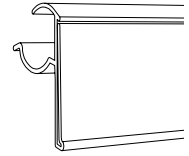
For wire shelves with two horizontal front wires (example Wanzl-WireTech shelf).

Label heights 26 and 39 mm.

Available in different colours.

FRW26, number per carton: 50.

FRW39, number per carton: 40.



GLS6-

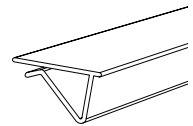
Datastrip for glass, wood and metal shelves

For shelves 3-6 mm thick.

Label heights 26, 30, 35, 39, 45, 52, 60, 70 and 76 mm.

The front is assembled on the rear piece and available in different colours.

Number per carton: 25.



GLS10-

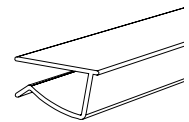
Datastrip for glass, wood and metal shelves

For shelves 7-10 mm thick.

Label heights 30, 35, 45, 52, 60, 70 and 76 mm.

The front is assembled on the rear piece and available in different colours.

Number per carton: 25.



GLSxx-

Datastrip for glass, wood and metal shelves

For shelves 7-10 mm thick.

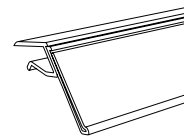
With approx. 20° angle.

Top parts: 34 mm (GLS26-), 22 mm (GLS39-) and 23 mm (GLS 17-, GLS 20-).

Label heights 17, 20, 26 and 39 mm.

Available in different colours.

Number per carton: 25.



GLS20-0-

Datastrip for glass, wood and metal shelves

For shelves 7-10 mm thick.

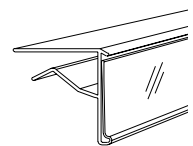
No angle.

Label height 20 mm.

Top part: 23 mm.

Available in different colours.

Number per carton: 25.

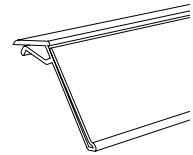




GLS35-

Datastrip for glass, wood and metal shelves

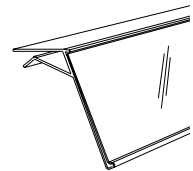
For shelves 4-7 mm thick.
 With approximately 37° angle.
 Label height 35 mm.
 Top part: 27 mm.
 Available in different colours.
 Number per carton: 25.



GLSS52-

Datastrip for glass, wood and metal shelves

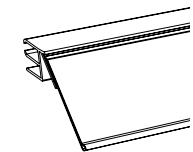
For shelves 4-7 mm thick.
 With approximately 37° angle.
 Label height 52 mm.
 Available in different colours.
 Number per carton: 25.



HPxx-

Datastrip for wire baskets/shelves

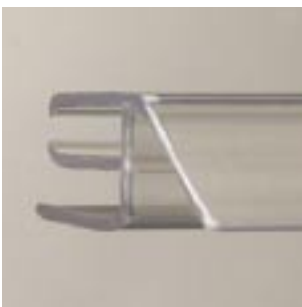
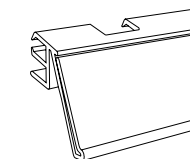
For wire with 5-8 mm Ø.
 With approximately 33° angle.
 Label heights 26, 39 and 52 mm.
 Available in different colours.
 Number per carton: 25.



HPxx-3-, HPxx-5-

Datastrip with cuts for wire shelves

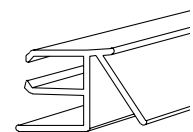
With three or five cuts for wire shelves with removable front wire.
 With approximately 33° angle.
 Label heights 26 and 39 mm.
 Available in different colours.
 Number per carton: 25.



HP-

Datastrip for wire baskets/shelves

For wire with 5-8 mm Ø.
 With approximately 33° angle.
 Label heights 30, 35, 45, 60, 70 and 76 mm.
 The front is assembled on the rear piece and available in different colours.
 Number per carton: 25.

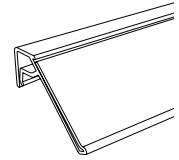




KB35-

Datastrip for wire baskets/shelves

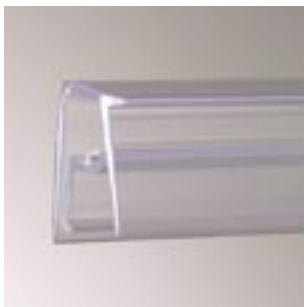
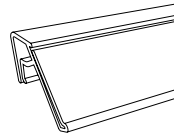
For wire baskets 5-8 mm.
With approximately 37° angle.
Label height 35 mm.
Available in different colours.
Number per carton: 25.



KExx-

Datastrip for glass fronts and wire baskets

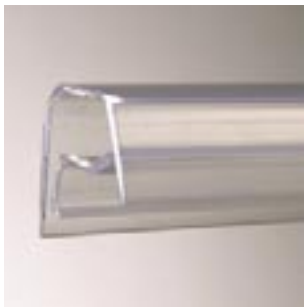
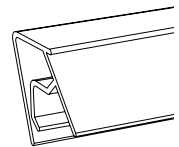
For glass fronts and wire baskets 4-8 mm.
With approximately 25° angle.
Label heights 26, 30, 35, 39, 52 and 70 mm.
Available in different colours.
KE26, KE30, KE70, number per carton: 50.
KE35, KE39, number per carton: 25.
KE52, number per carton: 75.



KE-

Datastrip for glass fronts and wire baskets

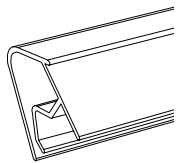
For glass fronts and wire baskets 4-8 mm.
With approximately 25° angle.
Label heights 45, 60 and 76 mm.
The front is assembled on the rear piece
and available in different colours.
Number per carton: 25.



KEA-

Datastrip for wire baskets

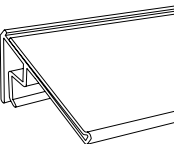
For wire with up to 10 mm Ø.
Label heights 26, 30, 35, 39, 45, 52, 60, 70 and 76 mm.
The front is assembled on the rear piece and available in
different colours.
Number per carton: 25

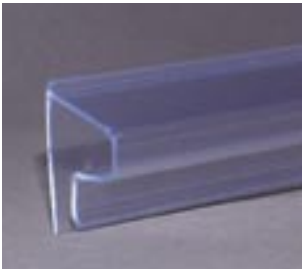


KOLxx-

Datastrip for glass, wood and wire shelves

For glass fronts, wire baskets and wooden shelves 4-8 mm.
With approximately 60° angle.
Label heights 26, 39, 52 and 70 mm.
Available in different colours.
KOL26, KOL39, number per carton: 25.
KOL52, number per carton: 75.
KOL70, number per carton: 50.

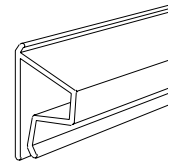




K-OLD-

Datastrip for glass, wood and wire shelves

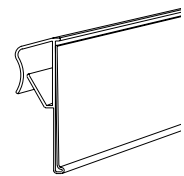
For glass fronts, wire baskets and wooden shelves 4-8 mm.
With approximately 60° angle.
Label heights 30, 35, 45, 60 and 76 mm.
The front is assembled on the rear piece and available in different colours.
Number per carton: 25.



KS39-

Datastrip for wire baskets

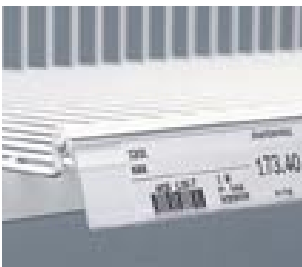
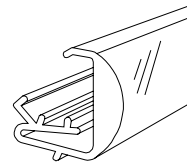
For wire baskets 4-8 mm.
With approximately 5° angle.
Label height 39 mm.
Available in different colours.
Number per carton: 125.



LEHE28-

Datastrip for HEMI shelves

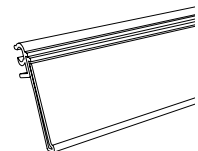
Label height 28 mm.
Colour: Transparent.
Magnifying effect.
Maximum length 150 mm.
Can be positioned at 3 different angles.
Number per carton: 50.



TKxx-

Datastrip for wire baskets

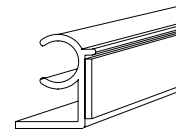
For wire baskets with 6-7 mm Ø wire.
With approximately 5° angle.
Label heights 26, 30, 35, 39 and 60 mm.
Available in different colours.
Number per carton: 50.



TK-

Datastrip for wire baskets

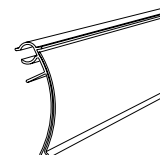
For wire baskets with 6-7 mm Ø wire.
With approximately 12° angle.
Label heights 45, 52, 60, 70 and 76 mm.
The front is assembled on the rear piece and available in different colours.
Number per carton: 25.



TKK39-

Datastrip for wire baskets

For wire baskets with 6-7 mm Ø wire.
With a curved front.
Label height 39 mm.
Available in different colours.
Number per carton: 50





TKCLxC-0020

Clips for wire baskets/shelves

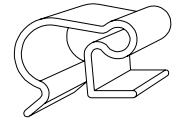
Clips for 5-11 mm Ø wire, assembled with a TKxx-Datastrip (can be used in open fridges).

Length 20 mm.

TKCL7C for 5-7 mm Ø wire.

TKCL11C for 8-11 mm Ø wire.

Number per carton: 100.



FOR TICKET RAILS



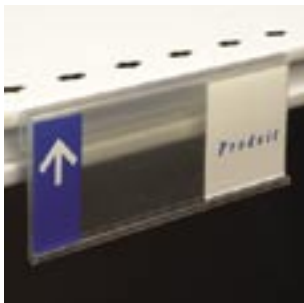
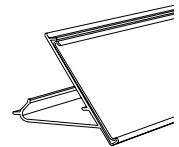
AMX39-

Datastrip for Arneg and UCGE shelves

Label height 39 mm.

Available in different colours.

Number per carton: 75.



ASA39-

Label holder for Alser C-rail shelf

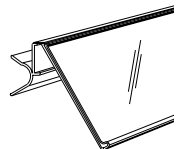
Label holder produced in the length of label.

Fits Alser 25 mm C-rail shelf.

A hinge function allows the label holder to flip-up.

Available in different colours.

Number per carton: 100-150.



BON45C-

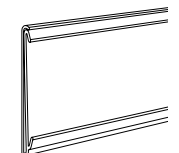
Datastrip for Bonnet shelves

For shelves with 45 mm high metal rail.

Label height 39-42 mm.

Available in different colours.

Number per carton: 50.



CEI39-

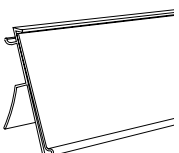
Datastrip for different C-rails

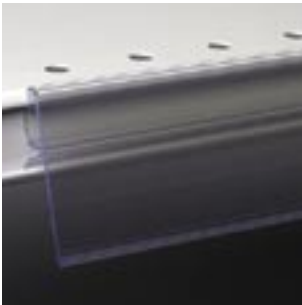
The datastrip fits very well on Cefla shelves.

Label height 39 mm.

Available in different colours.

Number per carton: 100.





FSA 39-

Label holder for La Fortezza

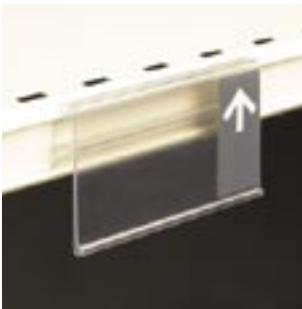
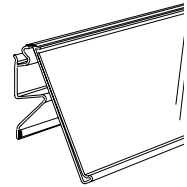
Fits La Fortezza 25mm shelf.

Label height 39 mm.

A hinge function allows the label holder to flip-up.

Available in different colours.

Number per carton: 100.



HSAxx-

Label holder for Hermes Metal C-rail shelf

Fits Hermes 25 mm C-rail shelf.

Available with different prints.

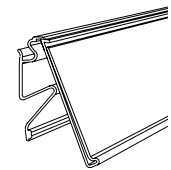
Label heights 30 and 39 mm.

Label holder produced in length of label.

A hinge function allows the label holder to flip-up.

Available in different colours.

Number per carton: 100.



II39-

Datastrip for various ticket rails

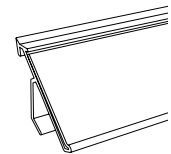
With an angle.

Rear size 30-39 mm.

Label height 39 mm.

Available in different colours.

Number per carton: 25.



IMPxx-

Datastrip for various ticket rails

With an angle. Rear size 26-39 mm for label height 26 mm,

27-43 mm for label heights 30 and 39 mm,

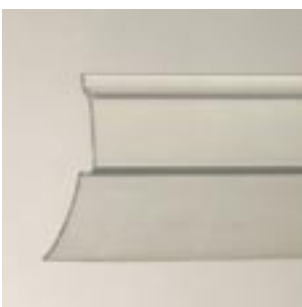
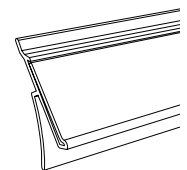
27-42 mm for label height 35 mm.

Label heights 26, 30, 35 and 39 mm.

Available in different colours.

IMP26, IMP30, IMP35, number per carton: 50.

IMP39, number per carton: 100.



IMP-

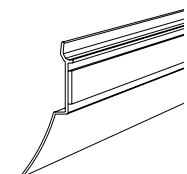
Datastrip for various ticket rails

With an angle. Rear size 28-40 mm.

Label heights 45, 52, 60, 70 and 76 mm.

The front is assembled on the rear piece and available in different colours.

Number per carton: 25.

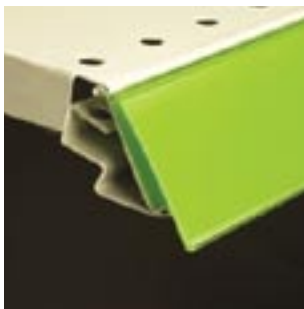
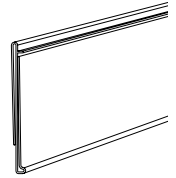




IPxx-

Datastrip for various ticket rails

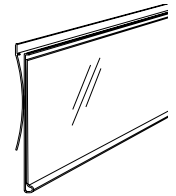
Flexible back. No angle.
Rear size 27-41 mm.
Label heights 26, 30, 39, 52 and 60 mm.
Available in different colours.
IP26, IP30, IP39, number per carton: 125.
IP52, number per carton: 90.
IP60, number per carton: 70.



IPFxx-

For UCGE and Arneg shelves

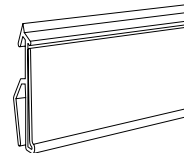
Flexible rear part. Rear size 29-33 mm. No angle.
Label heights 30 and 39 mm.
Available in different colours.
Number per carton: 100.



IT30-, ITN39-

Datastrip for various ticket rails

No angle. Rear size 28-36 mm for label height 30 mm,
28-40 mm for label height 39 mm.
Label heights 30 and 39 mm.
Available in different colours.
Number per carton: 50.



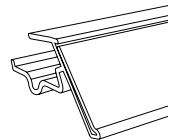
FOR METAL AND WOODEN SHELVES



ANxx-

Datastrip for Samuelsson metal shelves

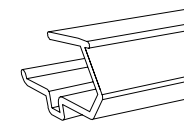
Label heights 26 and 39 mm.
Available in different colours.
Number per carton: 25.



AN-

Datastrip for Samuelsson metal shelves

Label heights 30, 35, 45, 52, 60, 70 and 76 mm.
The front is assembled on the rear piece and available in different colours.
AN-30, number per carton: 25.
AN-35, number per carton: 50.
AN-45, 52, 60, number per carton: 15.
AN-70, 76, number per carton: 10.

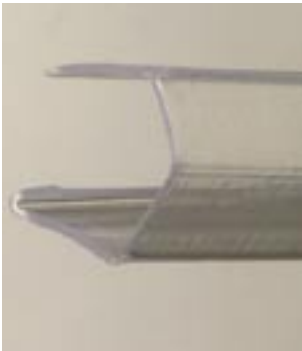
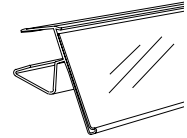




ANT39-

Datastrip for 16-22 mm shelves

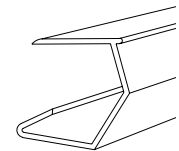
Label height 39 mm.
With friction material for better grip.
Available in different colours.
Number per carton: 25.



ANT-

Datastrip for 18-22 mm shelves

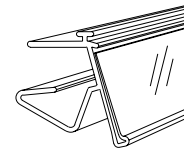
Label heights 26,30, 35, 45, 52, 60, 70 and 76 mm.
With friction material for better grip.
The front is assembled on the rear piece and available in different colours.
ANT-26, Number per carton: 50.
ANT-30, 45, Number per carton: 25.
ANT-35, 52, 60, Number per carton: 20.
ANT-70, -76- Number per carton: 10.



OANT26-

For 18-22 mm metal or wooden shelves

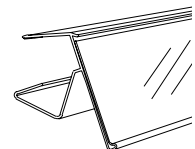
With integrated Optimal™ rail.
Label height 26 mm.
With friction material for better grip.
Available in different colours.
Number per carton: 25.



ANTL39-

Datastrip for 19-25 mm shelves

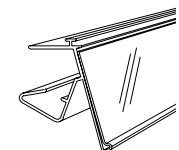
Label height 39 mm.
With friction material for better grip.
Available in different colours.
Number per carton: 40.



OANTL39-

For 19-25 mm metal or wooden shelves

With integrated Optimal™ rail.
Label height 39 mm.
With friction material for better grip.
Available in different colours.
Number per carton: 40.

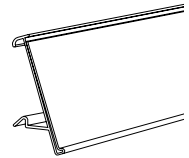




AST39-

Datastrip for Assman, Siegel, Tegometall

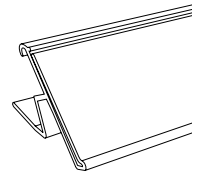
Label height 39 mm.
Available in different colours.
Number per carton: 160.



BA35-

Datastrip for ticket rails

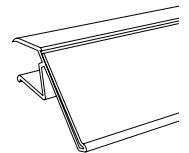
To be clipped over a 30 mm aluminium ticket rail.
With approximately 37° angle.
Label height 35 mm.
Available in different colours.
Number per carton: 25.



BT35-

Datastrip for 16 mm wooden shelves

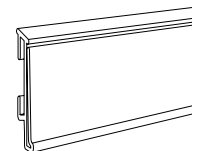
With approximately 37° angle.
Label height 35 mm.
Available in different colours.
Number per carton: 25.



FOxx-

Datastrip with no angle

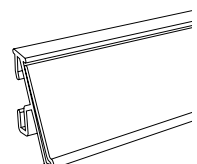
Made for fridges with air curtain.
Fixed with FO-FR-clips.
Label heights 30 and 39 mm.
Available in different colours.
FO30, number per carton: 25.
FO39, number per carton: 50.



FRxx-

Datastrip for FO-FR-CLIPS

For Gibrain Lavault, Hermes Metal,
Nuttall and Craig Nichols shelves.
Fixed with FO-FR-clips.
Label heights 26, 30 and 39 mm.
Available in different colours.
Number per carton: 50.



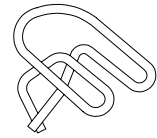


FO-FR-CLIPS

Metal clips for FO30-, FR30-, FR39-

Fits holes 4.2 - 4.8mm and thickness 0.8 - 1.3 mm.

Number per carton: 125.



GP39-

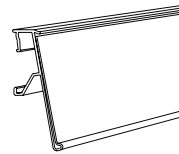
Datastrip for Gondela shelves

Can be fixed from the front.

Label height 39 mm.

Available in different colours.

Number per carton: 100.



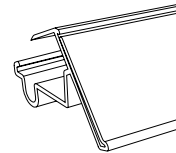
HA35-

Datastrip for Storebest shelves

Label height 35 mm.

Available in different colours.

Number per carton: 60.



HER39-

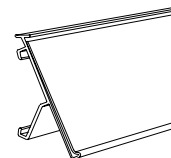
Datastrip for Hermes shelves

Can be fixed from the front.

Label height 39 mm.

Available in different colours.

Number per carton: 125.



HGIN39-

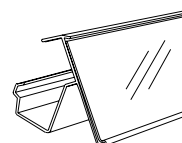
Datastrip for Hermes and other shelves

For Hermes Metal, Giblain Lavault and Intercraft shelves.

Label height 39 mm.

Available in different colours.

Number per carton: 70.

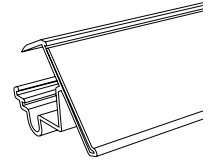




HKxx-

Datastrip for Hansa Mertens shelves

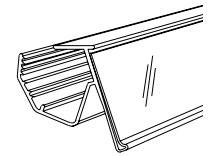
For Hansa Mertens, Hansa Kontor and other shelves.
Label height 39 and 52 mm.
Available in different colours.
Number per carton: 50.



HRNxx-

Datastrip for different flat metal shelves

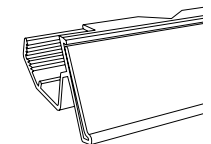
For Hestra, ROL, Expedit, UPO, ITAB and other shelves.
Label heights 26 and 39 mm.
Available in different colours.
Number per carton: 25.



HRNxx-1-, HRNxx-3-

Datastrip for different flat metal shelves

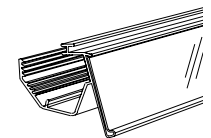
For Hestra, ROL, Expedit, UPO, ITAB and other shelves.
With one or three cuts for shelves with a front.
Label heights 26 and 39 mm.
Available in different colours.
Number per carton: 25.



OHRNxx

Datastrip for different flat metal shelves

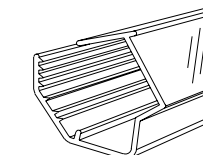
With integrated Optimal™ rail.
For Hestra, ROL, Expedit, UPO, ITAB and other shelves.
Label heights 26 and 39 mm.
Available in different colours.
Number per carton: 25.



HRN-

Datastrip for different flat metal shelves

For Hestra, ROL, Expedit, UPO and other shelves.
Label heights 30, 35, 45, 52, 60, 70 and 76 mm.
The front is assembled on the rear piece and available in different colours.
Number per carton: 50.

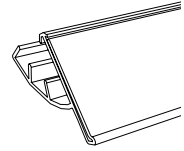




LDM39-

Datastrip for Dekormetal shelves

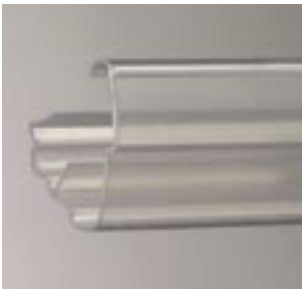
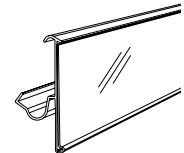
Can be used at three different angles.
Label height 39 mm.
Available in different colours.
Number per carton: 75.



LSRxx-

Datastrip for Linde refrigerator

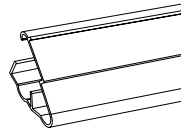
Reduced LSxx-profile. Can be used on Linde Clips.
Label height 30, 39 and 52 mm.
Available in different colours.
LSR30, LSR39, number per carton: 40.
LSR52, number per carton: 90.



LS-

Datastrip for Linde and other shelves

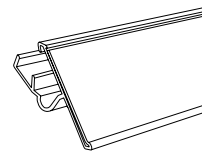
For Linde, Storebest, Tegometall and other shelves.
Label heights 45, 70 and 76 mm.
The front is assembled on the rear piece and available in different colours.
LS-45, LS-70, number per carton: 25.
LS-76, number per carton: 15.



LSB39-

Datastrip for BFN shelves

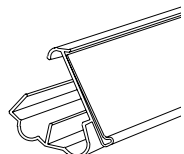
Can be used at two different angles.
Label height 39 mm.
Available in different colours.
Number per carton: 75.



LSxx, LSN26-

Datastrip for Linde, Tegometall and other shelves

For Linde, Storebest, Tegometall and other shelves.
Can be used at two different angles.
Label heights 26, 30, 35, 39, 52 and 60 mm.
Available in different colours.
LSN26, Number per carton: 100.
LS30, LS35, number per carton: 25.
LS39, number per carton: 75.
LS52, number per carton: 60.
LS60, number per carton: 50.





LSFNxx-

Datastrip for Linde, Tegometall and other shelves

For Linde, Storebest, Tegometall and other shelves.

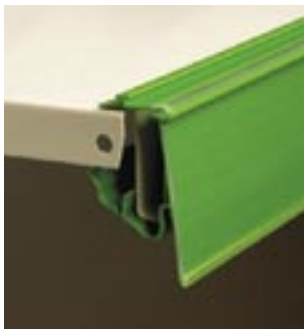
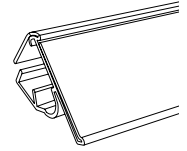
With hinge covering the U-channel.

Label heights 30 and 39 mm.

Available in different colours.

LSFN30, number per carton: 65.

LSFN39, number per carton: 60.



OLSFxx-

Datastrip with integrated Optimal™ rail

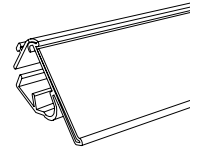
Fits Tegometall, Linde and Storebest shelves.

Label heights 30 and 39 mm.

Available in different colours.

OLSF30, number per carton: 65.

OLFS39, number per carton: 50.



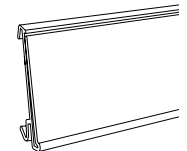
ME39-

Datastrip for Hansa Mertens shelves

Label height 39 mm.

Available in different colours.

Number per carton: 25.



MGWxx-

Datastrip for Hansa Mertens shelves

Can be fixed from the front.

With approximately 25° angle.

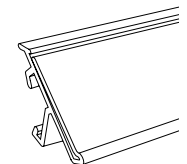
Label heights 26, 39, 52 and 60 mm.

Available in different colours.

MGW26, number per carton: 50.

MGW39, number per carton: 125.

MGW52, MGW60, number per carton: 100.



MGW-

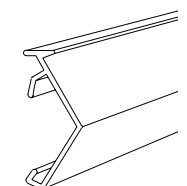
Datastrip for Hansa Mertens shelves

Can be fixed from the front.

Label heights 30, 35, 45, 70 and 76 mm.

The front is assembled on the rear piece and available in different colours.

Number per carton: 25.

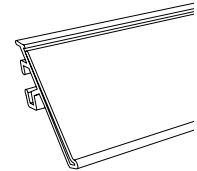




MOF39-

Datastrip for Fortezza and Detroit shelves

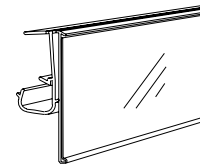
Label height 39 mm.
Available in different colours.
Number per carton: 25.



MOS52-

Datastrip for Mostola and ZAF shelves

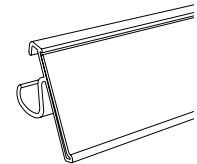
With flexible dust cover over U channel.
Can be mounted at three different angles: 0°, 20° and 35°.
Label height 52 mm.
Available in different colours.
Number per carton: 60.



OKA39-

Datastrip for Montan and other shelves

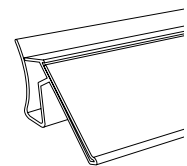
Label height 39 mm.
Available in different colours.
Number per carton: 100.



OKNxx-

Datastrip for Otto Kind shelves

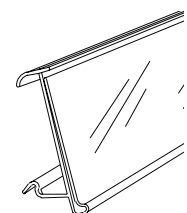
Label heights 30 and 39 mm.
Available in different colours.
OKN30, number per carton: 75.
OKN39, number per carton: 60.



PLA39-

Datastrip for Planova shelves

Label heights 39 mm.
Available in different colours.
Number per carton: 125.

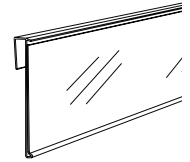




RAK52-

Datastrip for Front Risers

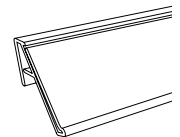
For front risers with thickness 4-5 mm.
Label height 52 mm.
Available in different colours.
Number per carton: 100.



RANxx-

Datastrip for 1-2 mm thick plate

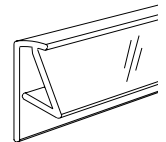
Profile to be pressed over the plate.
Label heights 26, 30, 39, 52 and 60 mm.
Available in different colours.
RAN26, RAN52, RAN60, number per carton: 25.
RAN30, RAN39, number per carton: 50.



RAN-

Datastrip for 1-2 mm thick plate

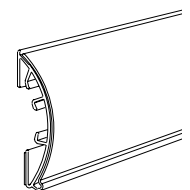
Profile to be pressed over the plate.
Label heights 35, 45, 70 and 76 mm.
The front is assembled on the rear piece and available in different colours.
N.B. It must be stated if the strip is to be used in cold areas.
Number per carton: 25.



RFWxx-TP-

Datastrip for wire baskets or ~1mm thick plates

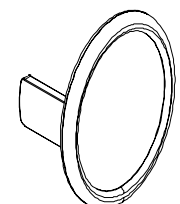
Profile with a nice round shape.
Is available with tape.
Label height 38 and 52 mm.
Available in different colours.
RFW38, number per carton: 50.
RFW52, number per carton: 25.



WENDxx

Endcap for RFWxx-

Mounted at the end of the RFWxx- profile.
Only available in RAL7035.
Number per carton: 200.





TExx-

Datastrip for Tegometall shelves

Label heights 26, 30, 39, 52 and 76 mm.

Approx. 5° angle

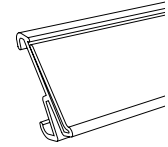
Available in different colours.

TE26, TE52, number per carton: 120.

TE30, number per carton: 115.

TE39, number per carton: 125.

TE76, number per carton: 50.



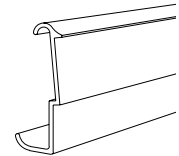
TE-

Datastrip for Tegometall shelves

Label heights 45, 60, and 70 mm.

The front is assembled on the rear piece and available in different colours.

Number per carton: 50.



TENxx-

Datastrip for Tegometall shelves

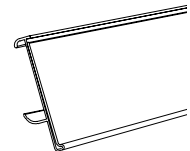
No angle.

Label height 30, 39 and 60 mm.

Available in different colours.

TEN30, TEN39, number per carton: 180.

TEN60, number per carton: 25.



YU39-

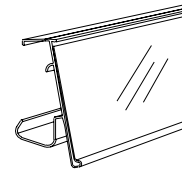
Datastrip for Yudigar shelves

With flexible dust cover over U channel.

Label height 39 mm.

Available in different colours.

Number per carton: 110.



YUD39-

Datastrip for Yudigar shelves

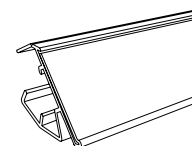
Can be used at two different angles.

With flexible dust cover over U channel.

Label height 39 mm.

Available in different colours.

Number per carton: 75.



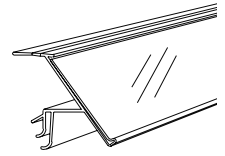
hl datastrip



ZAFN39-

Datastrip for ZAF shelves

With flexible dust cover over U channel.
Label height 39 mm.
Available in different colours.
Number per carton: 75.



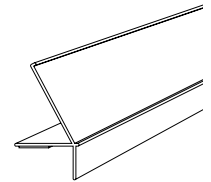
FOR LOWER SHELVES



BD-TP-

Double datastrip for DBR30-

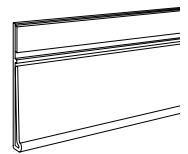
Double strip for DBR30- or riser at the top and optional DBR-strip at the bottom.
Available in different colours.
BD-TP, number per carton: 50.
BD-TP with DBR30, number per carton: 25.
BD-TP with DBRxx, number per carton: 15.



DBDxx-TP-

Datastrip for making double datastrips

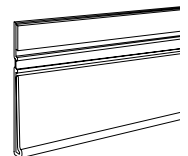
To be fitted on a single datastrip to make a double datastrip.
Label heights 26, 30, and 39 mm.
Available in different colours.
Number per carton: 50.



GSxx-TP-

Datastrip for making double datastrips

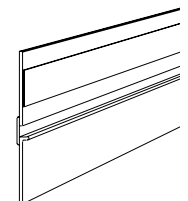
To be fitted on a single datastrip to make a double datastrip.
With a hinge function.
Label heights 26, 30, 39 and 52 mm.
Available in different colours.
GS26, GS39, Number per carton: 50.
GS30, GS52, Number per carton: 25.



GSN-TP-

Datastrips for making double datastrips

To be fitted on a single datastrip to make a double datastrip.
With a hinge function.
Label heights 35, 45, 52, 60, 70 and 76 mm.
The front is assembled on the rear piece and available in different colours.
Number per carton: 25.

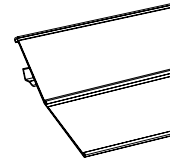




LS39-39-

Double datastrip

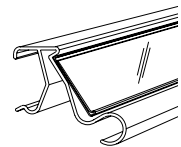
For Linde, Storebest, Tegometall and other shelves.
Label height 39 mm (upper strip) and 39 mm (lower strip).
Available in different colours.
Number per carton: 20.



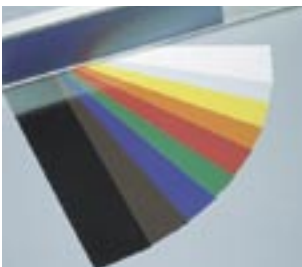
BTExx-xx-

For Tegometall shelves

Bumper profile to protect lower shelves.
Label heights 30 and 39 mm.
Available in different colours.
BTE30-30, number per carton: 40.
BTE39-39, number per carton: 35.



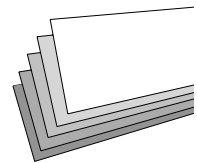
MISCELLANEOUS



FP-

Coloured infill strip for HL Datastrips

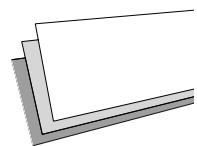
Available for all label heights and in the 9 standard colours white, grey, yellow, orange, red, green, blue, brown and black.
See also FP- infill strips with printed graphics and wood imitations in the chapter for Shelftalkers.
Delivered in the requested length up to 1340 mm.
Number per bag: 100.



FP-Oak, FP-Beech and FP-Cherry

Imitation wood infill strip for HL Datastrips

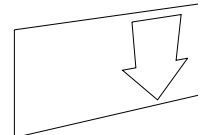
Great looking wood imitations in non cracking material.
Available for all label heights and delivered in the requested length up to 1340 mm.
Number per bag: 100.



BGR26-

Transparent strip with printed arrows

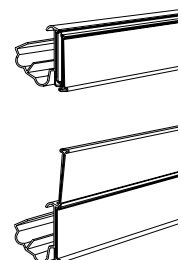
To be used for example with a double Datastrip.
Standard label height 26 mm, arrow colour black.
Other heights and arrow colours on request.
Number per bag: 25.



GSL26-

Datastrip with hinged function

Double folded labels can be read from both sides to save space. Datastrip mounted into the label pocket of the existing datastrip can be read from both sides.
Label height 26 mm.
Available in different colours with or without tape.
Number per carton: 50.



WHICH STRIPS FOR WHICH SHELVES?

| Shelf | Strip |
|----------------------------|--|
| Arneg | AMX-, IPF- |
| Alser | IMP-, IP-, IT-, ITN-, MPAL- |
| Alser 25 mm C-rail | ASA-, MPA25-, OMPA25- |
| Assman | AST- |
| Beanstalk | BEA- |
| BFN | LSB- |
| Bonnet | BON- |
| Cefla | CEI-, IMP- |
| Craig Nichols | FR- |
| Dekormetal | LDM- |
| Detroit | MOF- |
| Expedit | HRN-, OHRN-, OMPHRN- |
| Fortezza | MOF-, MPLF-, FSA39- |
| Giblain Lavault | FR-, HGIN- |
| Gondela | GP- |
| Hansa Kontor | HK- |
| Hansa Mertens | HK-, ME-, MGW- |
| Hermes Metal | FR-, HER-, HGIN-, IMP-, IP-, IT-, ITN- |
| Hermes 25 mm | MPHE25- |
| Hermes 25 mm C-rail | HSA-, OMPHC- |
| Hestra | HRN-, OHRN-, OMPHRN- |
| HL Display | MPHL-, OANTL- |
| Interkraft | HGIN- |
| ITAB | HRN-, OHRN-, OMPHRN- |
| Linde | LS-, LSFN-, LSN-, LSR-, OMPRA- |
| Montan | OKA- |
| Mostoles | MOS-, ZAFN- |
| Nuttall | FR-, SAF- |
| Otto Kind | OKN- |
| Planova | IN-, PLA- |
| ROL | HRN-, OHRN-, OMPHRN- |
| Samuelsson | AN- |
| SEV | SEV- |
| Siegel | AST- |
| Storebest | HA-, LS-, LSFN-, LSN- |
| Tegometall | AST-, BTE-, LS-, LSFN-, LSN-, OMPTE-, TE-,TEN- |
| UCGE | AMX-, IPF- |
| Umdasch | IN- |
| UPO | HRN-, OHRN-, OMPHRN- |
| Van Keulen | LS-, LSFN-, LSN-, OLSFN-, OMPRA- |
| Wanzl | KS- |
| Wanzl Wire Tech | FRW- |
| Yudigar | YU-, YUD- |
| ZAF | MOS-, ZAFN- |

DATASTRIPS THAT CAN ALSO BE ORDERED IN PET:

| | | |
|----------|------------|--------|
| 3312- | HER- | PL- |
| 3030- | K-OLD- | TEN39- |
| AHB2- | LS- | TEN52- |
| AHF2- | MGW52- | TE- |
| ANT- | MGW60- | TK- |
| ANTL- | MGW- | WOF26- |
| AT80E- | NCFN- | WOF30- |
| DBR26- | OANTL- | WOF39- |
| DBR30- | OFRK30- | WOF52- |
| DBR39- | OFRK40- | |
| DBR52- | OFRK60- | |
| DS10- | OFRK80- | |
| EFN- | OFRK80A30- | |
| GLS10-0- | OPB- | |
| GP- | OPH- | |